



HEAD START & SD EARLY LEARNER

ADVOCACY

101

Deb Soholt, RN, MS, FAAN
Former SD State Senator

AMAZING MISS

Early Childhood Education

A positive voice,
powerful advocate and
promoter
of quality programs for
children, families &
communities in South Dakota



"The first five years
have so much to do
with how the next 80 —
turn out".

Bill Gates

Quite a Story Tell

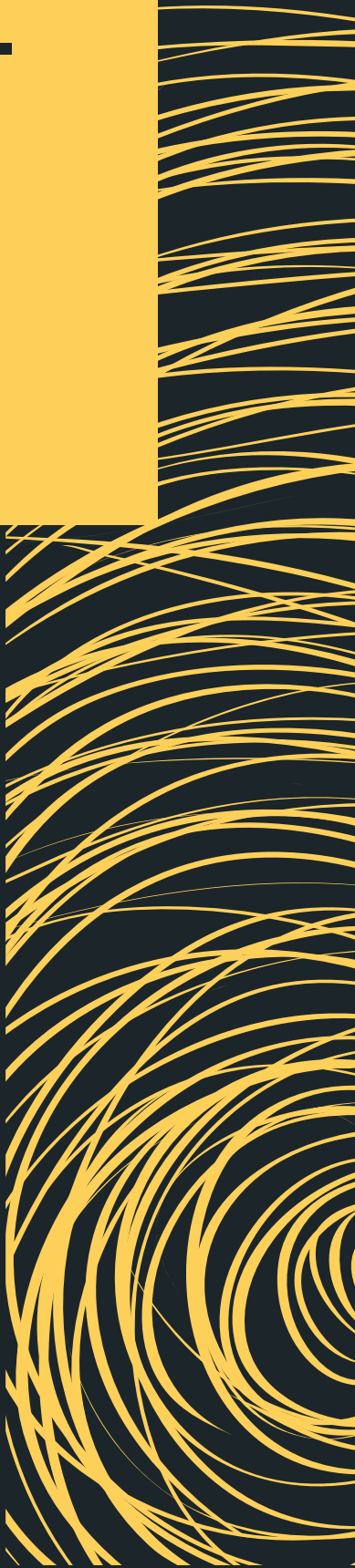


Kids Matter!
Especially the little
ones...



Early Start —

AND YET...



ASCD Whole Child SD Snapshot
Children's Health care Report Card SD
Kids Count SD

18K

2019 UNINSURED
SD KIDS

7.8% of all kids
87.7% eligible in CHIP

19 %

SD KIDS IN POVERTY
U.S. = 22%

55% American Indian
Children in Poverty
11% White Children

5 6 6 6

2019 SD KIDS
IN HEAD START

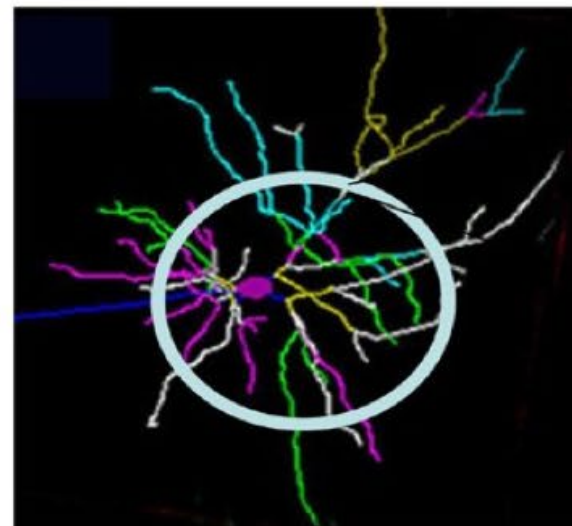
Too many still left out



Center on the Developing Child
HARVARD UNIVERSITY

Persistent Stress Changes Brain Architecture

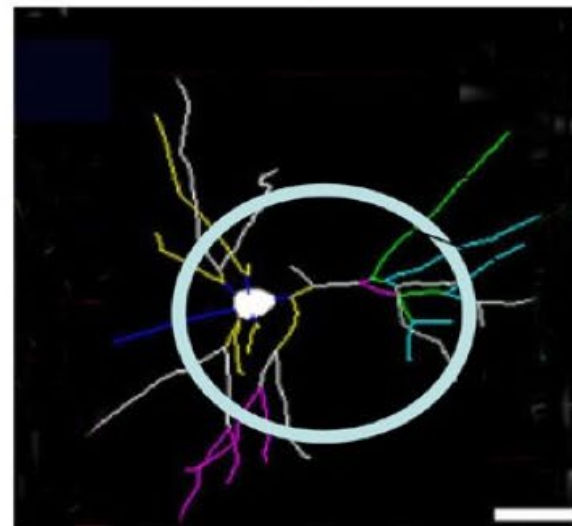
Normal



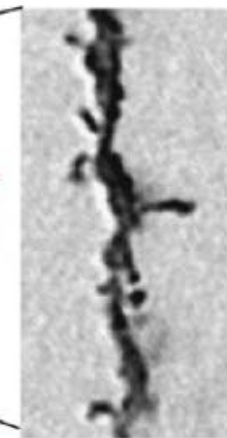
Typical neuron—
many connections



Toxic
stress



Damaged neuron—
fewer connections



Prefrontal Cortex and
Hippocampus

Sources: Radley et al. (2004)
Bock et al. (2005)

Harvard
University Center
on the
Developing Child

"The Science of Early
Childhood Development"

National Scientific Council on
the Developing Child

www.developingchild.harvard.edu

MALTTREATME



2015 - 4000 KIDS/YEAR
SEXUALLY ABUSED
2 TRIBES REPORTED

ADVERSE CHILDHOOD
EXPERIENCES (ACES)

RETRAUMATIZATION



Social Consciousness

- shared within society
- social awareness problems of different societies
- conscious difficulties/hardships



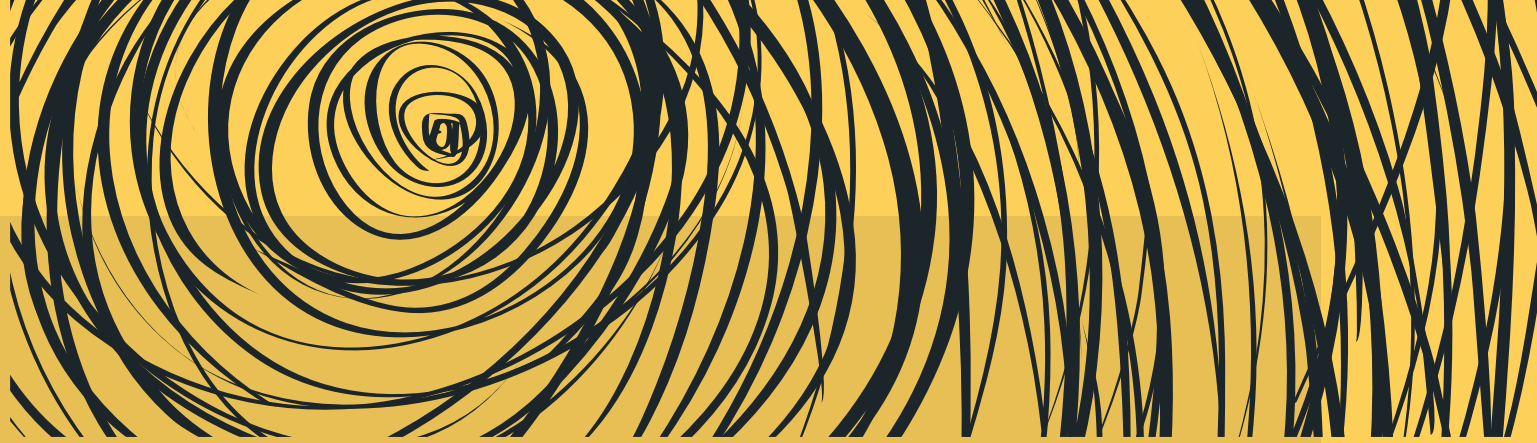


Moral Imperative

- principle in mind that compels to act
- conscience
- Basic experience of encountering the right



SOUTH DAKOTA LEGISLATURE



09



S B 191

Planning &
benchmarks for
state-supported
Pre-K

10



S B 191

SD Early Learning
Council

12



H B 1208 & 1151

SD Early Learning
Council & Tuition
paid group homes,
private day care ctrs

13



H B 1183

Pilot home-based
virtual preschool
education

How a Bill Becomes Law

SD LEGISLATIVE RESEARCH
COUNCIL (SDLRC)

<http://legis.sd.gov/>

PRIME SPONSOR, 2ND
CHAMBER, COMMITTEE,
FULL CHAMBER

PRIME SPONSOR, CHAMBER
OF ORIGIN, COMMITTEE,
FULL CHAMBER

Senate # begins 1 House # begins 1000

GOVERNOR'S SIGNATURE
VETO - 2/3 MAJORITY
OVERRIDE



SO MANY WAYS
TO ADVOCATE

What Type Political Junkie?

What Legislative District are
you in?

Who are your District
Legislators?

Who are the Lobbyists for your
Organization?



WHAT CAN
YOU DO?

Attend Children's Day at Capitol

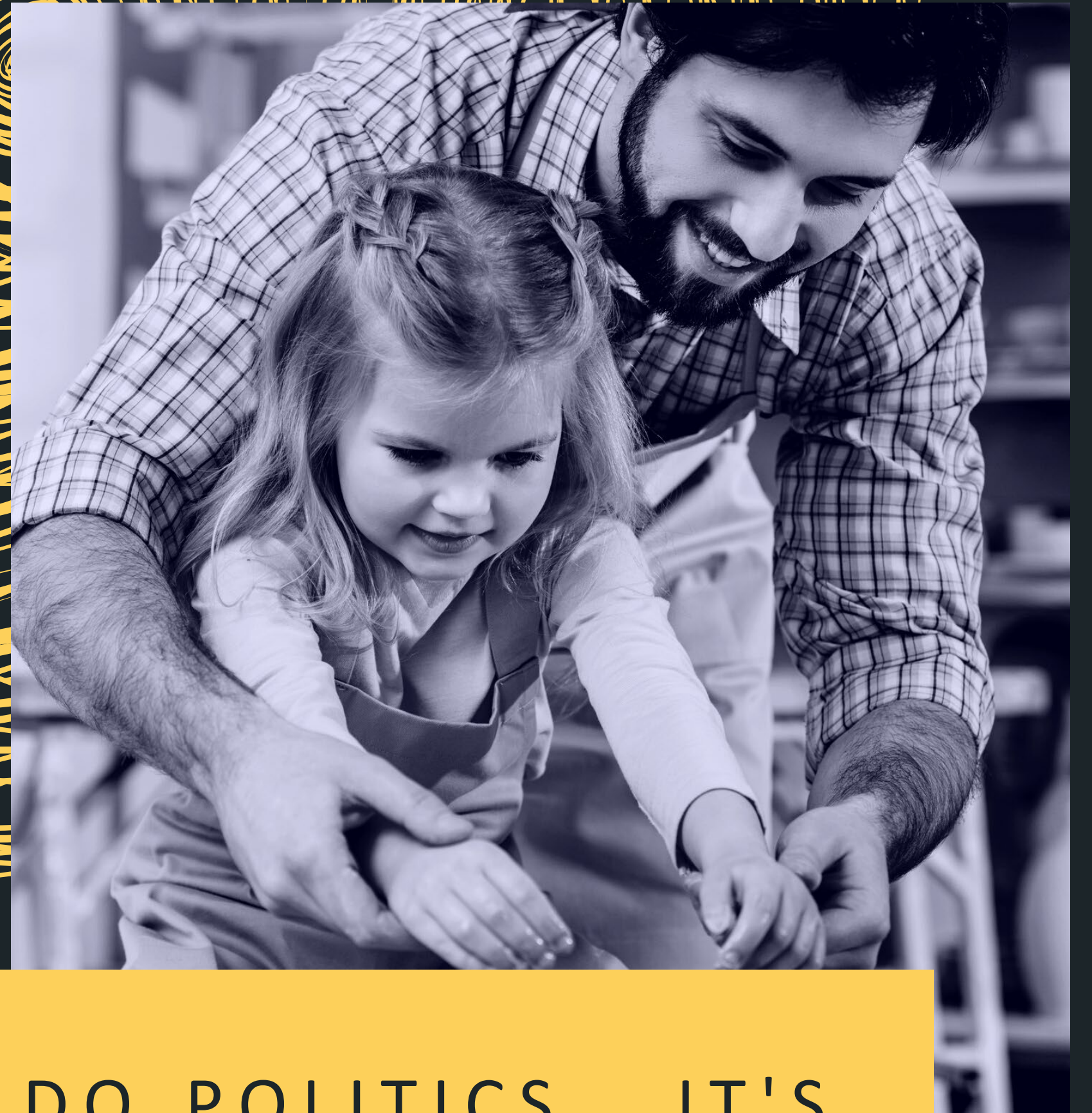
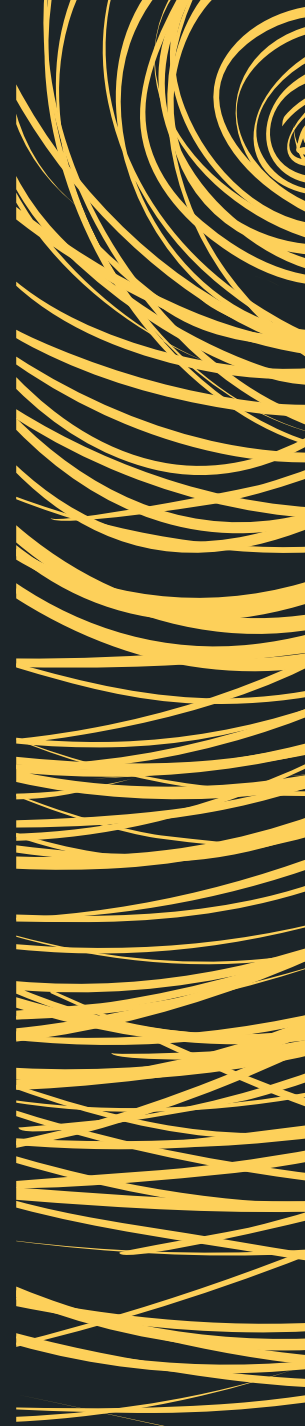
Personalize the Group Message -
tell a story based on what you are
for

Pick up an issue nugget

Show up for forums with a wicked
question

Help a candidate
Become a candidate

— Thoughts??



AND REMEMBER, WE ALL DO POLITICS. IT'S
JUST A MATTER OF DEGREE.

